



# ROCK TO THE FUTURE

Supporter Impact Report | 2018-2019



PREPARING THE NEXT GENERATION FOR EVERY STAGE.

Rock to the Future is a 501(c)3 organization founded in 2010 that provides music education for Philadelphia's youth from underserved neighborhoods and under-resourced schools at no cost to them or their families. Using music, our programs ignite passion and creativity, support academic achievement, and improve self-esteem. We empower individuals and strengthen communities.

# A MESSAGE FROM THE FOUNDING EXECUTIVE DIRECTOR

A few days ago, I watched every student in the MusiCore After School Program take the stage at World Cafe Live in front of their friends and families. It's always amazing to see these students, some of whom just picked up an instrument for the first time this year, play their hearts out with their bandmates. In MusiCore, students form bands and work together to write an original song.



The songs this year covered all kinds of subjects in a variety of genres, but one thing stayed the same: students expressing themselves through music.

Rock to the Future's goals go beyond teaching students to play music. We support the whole student by providing homework help, college trips, and academic support. We also work with students to develop a personalized plan to combat stress and negative emotions. The world can be stressful, especially to youth who have been impacted by adverse childhood experiences like poverty. Music can be an essential tool for students to identify their emotions and express themselves.

I am beyond proud to help these amazing young adults grow and achieve through music. Thank you for rocking with us this year - we could not do it without you.

A handwritten signature in black ink that reads "Jessica Craft".

Jessica Craft  
Founding Executive Director

**TWICE AS NICE!**

**This year, Rock to the Future opened a second MusiCore After School location in the Germantown neighborhood of Philadelphia. Thanks to your support, Rock to the Future brought music back to another Philadelphia school!**



Provided directly in underserved communities and under-resourced schools.

## STUDENTS SERVED

2

MusiCore After School Locations  
(1 added this year!)

6

MobileMusic School Partners

2

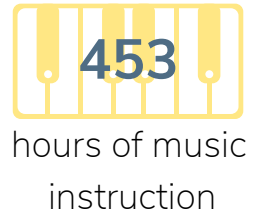
Summer Camps



99% paid no fees to participate



55% of students served have no access to other sources of music education.  
26% increase in students served this year!



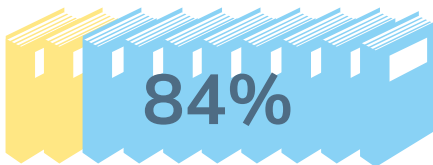
## CONNECTING THROUGH MUSIC

35+ student performances for over 4,000 attendees!

300 friends, family, and community members attended the MusiCore Year End Showcase at World Cafe Live



## BUILDING LEADERS THROUGH MUSIC



Students that MusiCore serves who are considered to be "at risk" of becoming disconnected from school.



100% of graduating seniors are on professional career paths, enrolled in college or the military.

100% of 8th grade students in MusiCore were accepted into special admission high schools.

67% of MusiCore students increased by one or more grade levels in one or more core classes.

\$4,250 Provided by Rock to the Future in scholarships to graduating seniors through the Jamie and Andrew Katz Scholarship Fund..

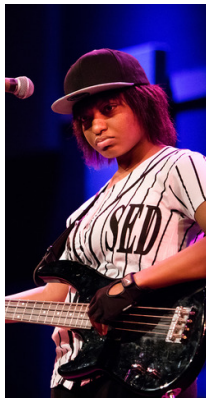


## OUR STUDENTS ROCK!

When Ethan joined Rock to the Future, his only musical experience was a video game. But, when his mom saw an ad for Rock to the Future, she knew it would be a great way to encourage his creativity. Now, Ethan is an accomplished drummer and guitarist, and he has made lasting friendships with other Rock to the Future students.



**"I would say without Rock to the Future I wouldn't be where I am now. It just made me feel more at home." - Ethan**



**"Rock to the Future helps me by empowering me with motivational conversation and by separating me from stressful environments. When I come to the after school program it sets me free." - Destiny**

**"I am forever grateful for this opportunity and I will always cherish it. Wherever I go, I will always have Rock to the Future in my heart." - Camila**



Camila moved to Philadelphia in 2017 after Hurricane Maria damaged her family's home in Puerto Rico. Now, she's attending college for pre-med and music. Finding the right college is hard, but Rock to the Future helps by taking students like Camila on college visits and helping students with scholarships.



**"My participation in Rock to the future helped me by giving me a helping hand to achieve my academic and personal goals. Staff and other students motivated me due to their success in similar situations that I have faced." - Shem**

# YOU ROCK!

**Your support keeps Rock to the Future programs free for all students from underserved communities. We believe in the magic of music, and it means so much to us that you do to!**

## THANK YOU to our rockstar partners:

The Hamilton Family Charitable Trust  
Find Your Light Foundation  
Ardent FCU  
PNC Bank  
The Rosenlund Family Foundation  
PECO  
MOR Wealth Management LLC  
Hungry for Music  
FS Investments  
United Way of SE PA  
The School District of Philadelphia  
The Christopher Ludwick Foundation

The Hilda and Preston Davis Foundation  
The Emergency Aid of Pennsylvania Foundation  
The Huston Foundation  
The Philadelphia Foundation  
Founding Footsteps  
Sheila Fortune Foundation  
Jacobs Music  
The Nelson Foundation  
Penn Treaty SSD  
Hamilton Lane  
Russo Music  
Dolfinger-McMahon Foundation

The Allen Hilles Fund  
Citizens for the Arts in PA  
The Philadelphia Cultural Fund  
The Somers Team  
Patricia Kind Family Foundation  
Reverb Gives  
The Mill Spring Foundation  
Brolik  
Alfred and Mary Douty Foundation  
EisnerAmper  
Circle Thrift  
Pennsylvania Council of the Arts  
D'Addario Foundation  
Eagles Care